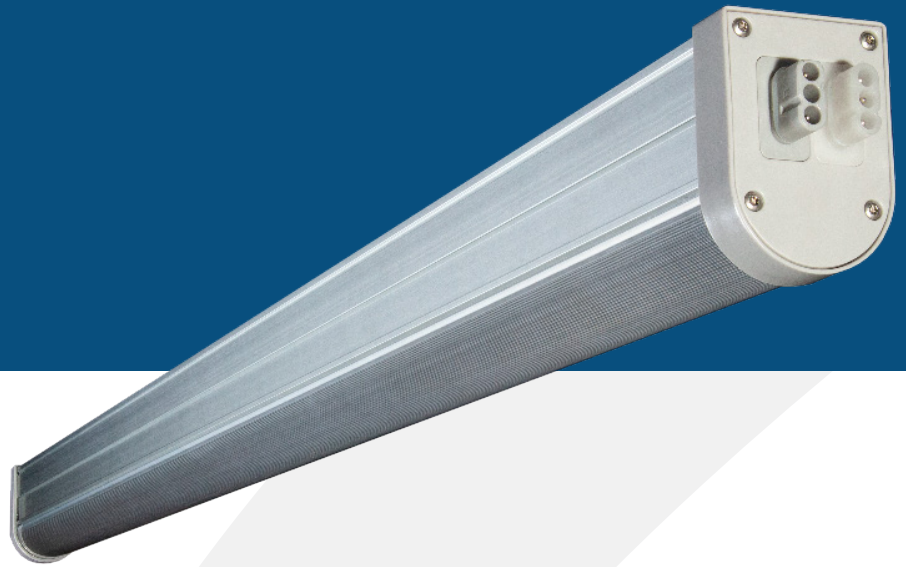




THRIVE AGRITECH

222 Broadway New York, NY 10038
(800) 205-7216
thriveagritech.com
info@thriveagritech.com



Boost XE

LED Light Bar

Boost XE is a high efficiency LED grow light designed to optimize plant growth for cannabis, leafy greens, vegetables and floriculture.

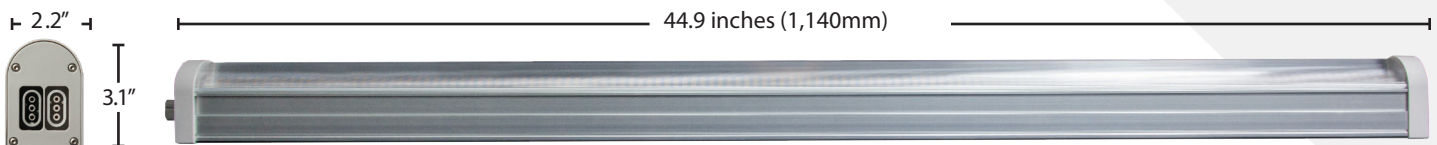
APPLICATIONS & FEATURES

- Multi-tier cannabis flower & veg up to 1,800 $\mu\text{mol}/\text{m}^2/\text{sec}$
- Single-tier leafy greens 200-300 $\mu\text{mol}/\text{m}^2/\text{sec}$
- 0-10V dimming
- Simple wiring and daisy-chaining
- 5-year warranty

SPECIFICATIONS

- TBAR-120W-FS2
- 120W Input Power, 336 $\mu\text{mol}/\text{sec}$ Light Output
- 2.8 $\mu\text{mol}/\text{joule}$ Efficiency
- Weight: 5.2 lbs. (2.4 Kg)
- 100V-277V Input Voltage
- Power Factor > 0.9
- IP66, ETL, UL8800
- 40,000 Hour Lifetime (Q90/B20)
- 40C max ambient temperature

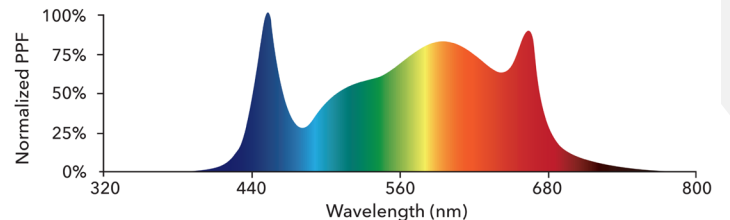
DIMENSIONS



BEAM ANGLE: 120 DEGREES



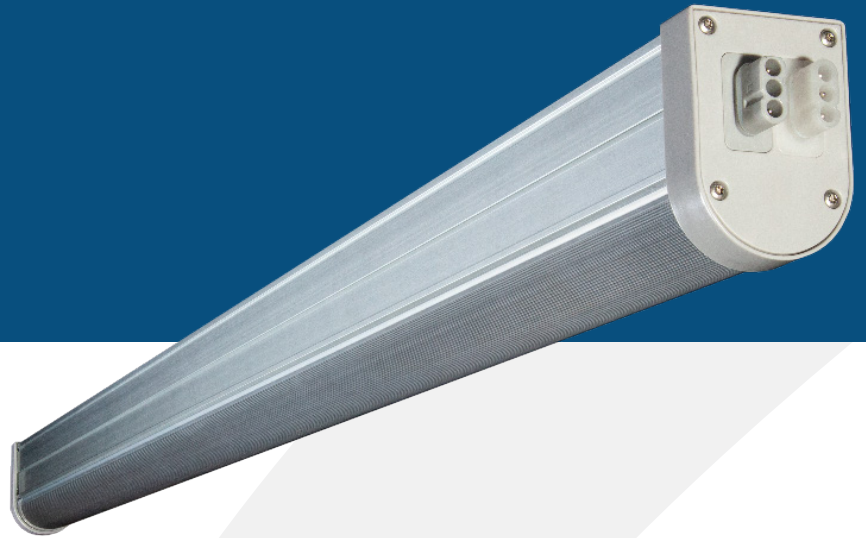
FULL SPECTRUM WHITE





THRIVE AGRITECH

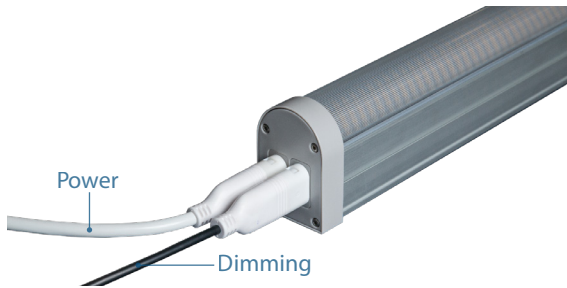
222 Broadway New York, NY 10038
(800) 205-7216
thriveagritech.com
info@thriveagritech.com



Boost XE LED Light Bar

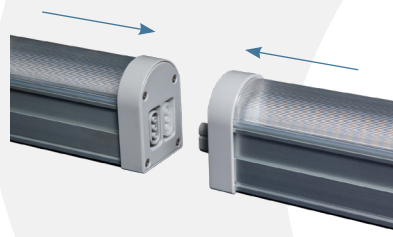
DIMMING

0-10V dimming from max intensity to off.



WIRING & INTERCONNECTION

Boost XE LED light bars can be electrically connected end-to-end or with interconnection cables. See the installation manual for detailed instructions.

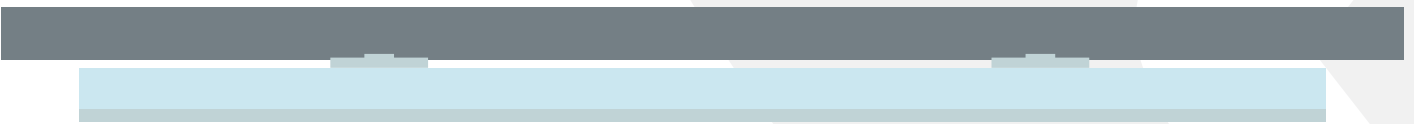


MAXIMUM DAISY-CHAIN

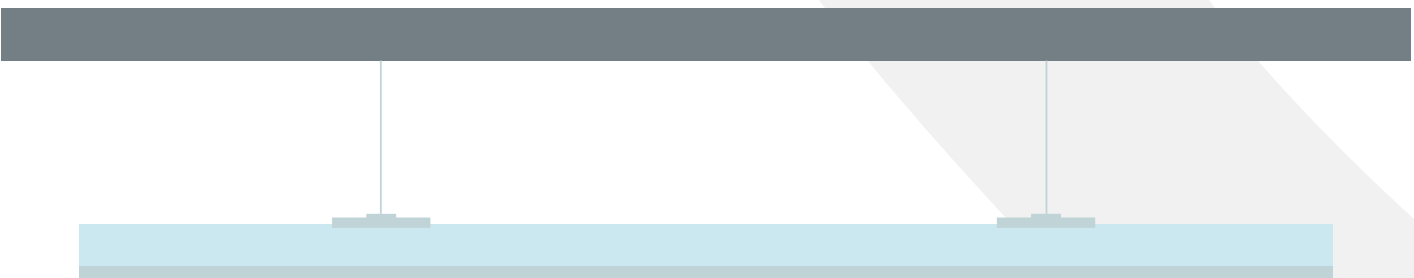
Voltage	Max # of connected	Current/Fixture
110	7	1.10 A
240	15	0.50 A
277	17	0.43 A

MOUNTING

FLUSH MOUNT



SUSPENSION MOUNT



LIGHTING LAYOUTS

Lighting layouts for a variety of horticulture applications are available, if you need a customized lighting layout please contact our customer support team. (800) 205-7216 • thriveagritech.com • info@thriveagritech.com

